

## Lavi D Over-ear Wireless Headphone

### QUICK START GUIDE

AD-HDP-PCLDBK-00

Dear Valued Customer,

In order to protect your consumer rights, please ensure that at the time of purchase you fill out the provided warranty certificate, coupled with the retailer stamp so as to ensure valid warranty.

親愛的顧客您好，為了保障您的權益，請您在購買時，立即請經銷商填寫購買日期並蓋店章，也請妥善保存保固書，才能享有本公司之完整售後服務。

Product Name* (品名*)				
Serial number* (序號*)				
Date of purchase* (購買日期*)	AD (西元)	Year (年)	Month (月)	Date (日)
Name (姓名)				
Telephone No. (電話)				
Address (地址)				
E-mail (電子信箱)				

Store of purchase (Official stamp required)  
經銷店章\* (請務必蓋章保固方為有效)

- Warranty period begins on the date of purchase of brand new, unused products by first-end user. Please retain receipt and warranty certificate as proof of purchase.
- If within warranty period, the product is determined defective, please return to the original store of purchase for a replacement.
- For additional services, please email info@luxa2.com or contact one of our global offices, of which, details can be found on the previous page.
- 未蓋店章及未填上購買日期，則保固期限以產品序列號所查詢到的出貨日期開始計算。
- 送修流程：聯絡原購買店家→退回不良品→店家維修→送修回顧客
- 如需其他服務，請寄電子郵件至 info@luxa2.com 信箱或直接聯繫 LUXA2 全球分公司暨辦事處，詳情請洽 LUXA2 官網 <http://www.luxa2.com.tw/>



©2009 Thermaltake Technology Co., Ltd. - LUXA2 Business Division

## Lavi D



## Package Contents



Lavi D Over-ear  
Wireless Headphone



Micro USB Cable

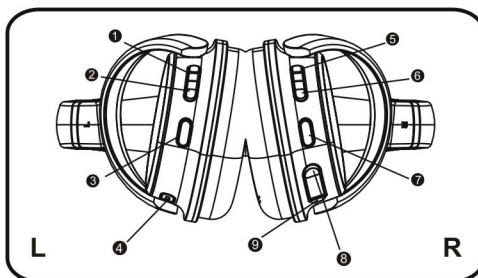


User Manual

## Parts and Functions

Before using your headset, it is recommended that you fully charge the battery during first use.

- |   |  |   |
|---|--|---|
| <p><b>4</b> Mic<br/>Mic<br/>麥克風<br/>Микрофон<br/>Micrófono<br/>ميكروفون<br/>Microfono</p>   | <p><b>5</b> Volume up<br/>Lautstärke erhöhen<br/>Augmentation du volume<br/>音量控制<br/>Увеличение громкости<br/>Subir volumen<br/>رفع مستوى الصوت<br/>Mais volume</p>                | <p><b>6</b> Volume down<br/>Lautstärke verringern<br/>Baisse du volume<br/>音量控制<br/>Уменьшение громкости<br/>Bajar volumen<br/>خفض مستوى الصوت<br/>Menos volume</p>       |
| <p><b>7</b> Power on/off<br/>Ein-/Austaste<br/>Mise sous/hors tension<br/>電源開關<br/>Кнопка вкл./выкл. питания<br/>Encendido/Apagado<br/>تشغيل/إيقاف<br/>Ligar/Desligar</p> | <p><b>8</b> Micro USB input<br/>Micro USB Eingang<br/>Entrée micro USB<br/>Micro USB 輸入端<br/>Вход Micro USB input<br/>Entrada Micro USB<br/>USB منفذ خرج<br/>Entrada Micro USB</p> | <p><b>9</b> Aux-In Port<br/>Aux-In Port<br/>Port d'entrée auxiliaire<br/>Aux-In 插子<br/>Порт Aux-In<br/>Puerto Aux-In<br/>منفذ دخول المكونات الإضافية<br/>Aux-In Porto</p> |



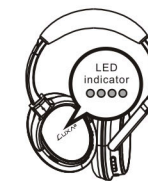
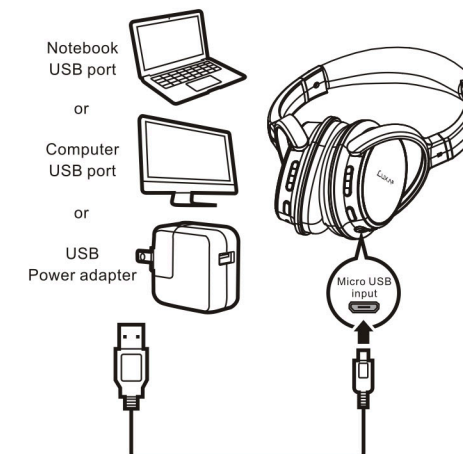
## LED Indicator

Status	Indicator
Power on	Blue (flashing)
Power off	Red (stable), off
Charging	Red (stable)
Fully charged	Blue (stable)
Pairing	Blue & red (flashing)

## Charging the Headset

The headset contains a Micro USB cable that is used to charge the device. This can be charged via the USB port on your computer or other compatible devices made for USB charging.

Simply insert the Micro USB cable into the corresponding port of the headset and plug the other end into the USB port of your USB charging compatible device and turn on. The LED indicator light on the headset will turn red (stable) whilst charging, and will turn blue once fully charged.



Status	Indicator
Charging	Red (stable)
Fully charged	Blue (stable)

Charge time from flat (0-100%) is approximately one hour and can provide up to sixteen hours of playing time via the headset.



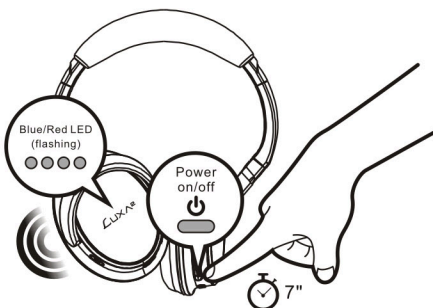
Status	Time
Charging time	1 hour
Playing time	16 hours

Note:  
- Users will still be able to use your headset whilst charging.

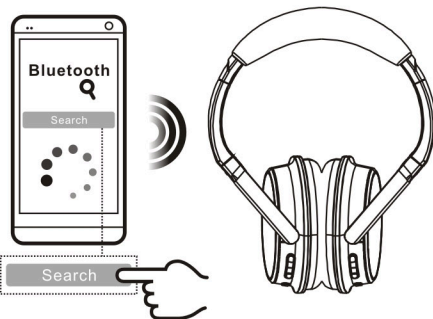
## Pairing

### First time pairing

1. Once the headset is turned on, press and hold the power button for about seven seconds to activate Bluetooth searching mode. The LED indicator will start to flash blue and red rapidly.



2. Activate the Bluetooth feature of your compatible device and search for Bluetooth devices.



4. Once successfully paired, the LED indicator will return to a slow flashing blue.



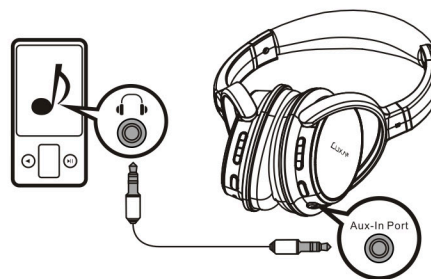
Note:  
After successful first-time pairing, your compatible device will automatically detect the headset device when it is turned on thereafter.

3. Select 'LUXA2 Lavi D' from the list of found devices and press to connect/pair.



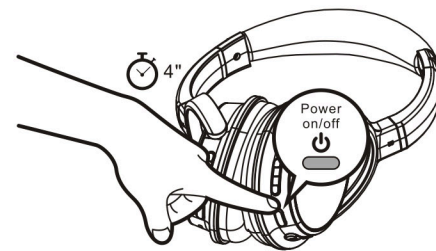
## Aux-in

Insert 3.5mm line-in cable into the aux-in port of the headset for wired play.



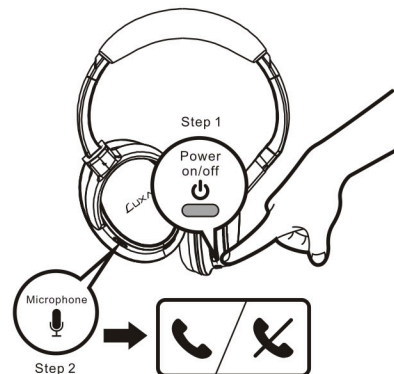
## Switch Off

To switch off the headset, press and hold the power button for approximately four seconds. The red (stable) LED light indicator will turn on, and then turn off as confirmation.



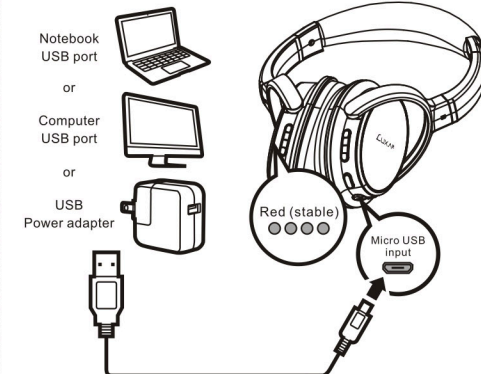
## Calls

To receive an incoming call once the headset is connected, press the power button. To end a call, press and hold the power button again.



## Clear Settings or Reset

In the event that you need to clear or reset the settings on your headset, insert the micro USB cable onto the headset and charge.



## English

### Specifications

- Bluetooth 4.0 connectivity (CSR)
- Supports Profile: A2DP, AVRCP, HSP, HFP
- Frequency: 2402MHz-2480MHz
- Wireless Range: 10m (360° open area)
- Speaker Driver:  $\Phi$ 40mm
- Frequency Response: 100Hz-9KHz
- Impedance: 32 Ohm
- SPL: 113dB $\pm$ 3dB
- Built in microphone:  $\Phi$ 4.0\*1.5mm, -42 $\pm$ 3dB
- Built in 450mAh lithium-polymer battery
- Micro-USB input port
- 3.5mm AUX-IN port
- Playing time: up to 16 hours
- Charging time: 1 hour
- Dimension: 170\*200\*75mm
- Weight: 189g
- Supports wireless/wired play

### Warnings:

- Don't drop, disassemble or attempt to repair the headphone by yourself.
- Avoid exposure to water or high humidity.
- Don't expose to any heat source.

## Français

### Spécifications

- Connectivité Bluetooth 4.0 (CSR)
- Profils pris en charge : A2DP, AVRCP, HSP, HFP
- Fréquence : 2402MHz-2480MHz
- Portée de la liaison sans fil : 10 m (dans un espace ouvert à 360°)
- Haut-parleurs :  $\Phi$ 40mm
- Bande de fréquence : 100Hz-9KHz
- Impédance : 32 Ohm
- SPL : 113dB $\pm$ 3dB
- Microphone intégré :  $\Phi$ 4.0\*1.5mm, -42 $\pm$ 3dB
- Batterie lithium-polymère 450 mAh intégrée
- Port d'entrée micro-USB
- Port d'entrée auxiliaire 3,5 mm
- Autonomie du casque en écoute : jusqu'à 16 heures
- Charge complète : 1 heure
- Dimensions : 170\*200\*75mm
- Poids : 189g
- Permet l'écoute sans fil/filaire

### Avvertissements:

- Ne laissez pas tomber, dissimuler ou tenter de réparer le casque par vous-même.
- Éviter l'exposition à l'eau ou à l'humidité.
- Ne pas exposer à une source de chaleur.

## Deutsch

### Technische Daten

- Bluetooth 4.0-Konnektivität (CSR)
- Unterstützte Profile: A2DP, AVRCP, HSP, HFP
- Frequenzgänge: 2402MHz-2480MHz
- Drahtlosreichweite: 10 m (Freifläche 360°)
- Lautsprechertriebwerk:  $\Phi$ 40mm
- Frequenzgänge: 100Hz-9KHz
- Lautsprecher-Impedanz: 32 Ohm
- SPL: 113dB $\pm$ 3dB
- Integriertes Mikrofon:  $\Phi$ 4.0\*1.5mm, -42 $\pm$ 3dB
- Integrierter 450-mAh-Lithium-Polymer-Akku
- Micro-USB-Eingang
- 3,5-mm-AUX-Eingang
- Wiedergabezeit: Bis zu 16 Stunden
- Volle Ladung: 1 Stunde
- Abmessungen: 170\*200\*75mm
- Gewicht: 189g
- Unterstützt kabellose/kabelgebundene Wiedergabe

### Warnungen:

- Nicht fallen lassen, verbergen oder zu versuchen zu reparieren oder den Kopfhörer alleine.
- Kontakt mit Wasser oder Feuchtigkeit vermeiden.
- Leisten Sie keine Wärmequelle aussetzen.

## 繁體中文

### 規格

- 藍牙 4.0 連接性 (CSR)
- 支援介面: A2DP, AVRCP, HSP, HFP
- 頻率: 2402MHz-2480MHz
- 無線範圍: 10公尺 (360° 開放空間)
- 揚聲器驅動尺寸:  $\Phi$ 40mm
- 頻率響應: 100Hz-9KHz
- 阻抗: 32 Ohm
- 聲音壓力位準: 113dB $\pm$ 3dB
- 內建麥克風:  $\Phi$ 4.0\*1.5mm, -42 $\pm$ 3dB
- 內建 450mAh 鋰聚合物電池
- Micro-USB 輸入端
- 3.5mm AUX-IN 端
- 播放時間: 最長 16 小時
- 充電時間: 1 小時
- 尺寸: 170\*200\*75mm
- 重量: 189g
- 支援無線/有線播放

### 警告:

- 請勿任意的拆解、排拆或改造耳機。
- 請勿暴露於潮濕的環境。
- 請遠離火源和高溫環境。

根據交通部低功率管理辦法規定:  
第十二條 經型式認證合格之低功率射頻電機, 非經許可, 公司、商號或使用者均不得擅自變更頻率、加大功率或變更原設計之特性及功能。  
第十四條 低功率射頻電機之使用不得影響飛航安全及干擾合法通信; 經發現有干擾現象時, 應立即停用, 並改善至無干擾時方得繼續使用。  
前項合法通信, 指依電信法規定作業之無線電通信。低功率射頻電機須忍受合法通信或工業、科學及醫療用電波輻射性電機設備之干擾。

## Русский

### Технические характеристики

- Подключение по Bluetooth 4.0 (CSR)
- Поддержка профиля: A2DP, AVRCP, HSP, HFP
- Частотные: 2402MHz-2480MHz
- Зона действия беспроводной сети: 10 м (открытое место на 360°)
- Излучатель динамика:  $\Phi$ 40 мм
- Частотные: от 100 Гц до 9 КГц
- Сопротивление динамика: 32 Ом
- SPL: 113dB $\pm$ 3dB
- Встроенный микрофон:  $\Phi$ 4.0\*1.5 мм, -42 $\pm$ 3dB
- Встроенная литий-полимерная батарея 450 мАч
- Входной порт Micro-USB
- 3,5 мм разъем Aux-in
- Время работы наушников: до 16 часов
- Время полного заряда: 1 час
- Размеры: 170\*200\*75 мм
- Масса: 189 г
- Поддержка воспроизведения в беспроводном/проводном режиме

### Внимание!:

- Не бросайте, плавьте или пытайтесь или отремонтировать наушники сами.
- Избегайте воздействия воды или высокой влажности.
- Не подвергайте к любому источнику тепла.

## العربية

### المواصفات

- الاتصال عبر Bluetooth CSR v4.0 (CSR)
- ملف الدعم: A2DP, AVRCP وA2DP, AVRCP, HSP, HFP
- تكرارات التردد: 2402MHz-2480MHz
- النطاق اللاسلكي يصل إلى 33 قدماً (10 أمتار)
- مشغل السماعة:  $\Phi$ 40مم
- تكرارات التردد: 100 هرتز حتى 9 كيلوهرتز
- معاوقة السماعة: 32 أوم
- SPL: 113dB $\pm$ 3dB
- ميكروفون مضمن:  $\Phi$ 4.0\*1.5mm, -42 $\pm$ 3dB
- بطارية polymer-450mAh الليثيوم أمبير/ساعة
- ميناء مدخل Micro USB الإضافي
- وقت التشغيل: يصل حتى 16 ساعات (يختلف وفقاً لمستوى الصوت ومحتوى الصوت)
- الشحن الكامل: 1 ساعة
- البعاد: 75 × 200 × 170 ملم
- الوزن: 189 جم
- دعم التشغيل اللاسلكي / السلكي

### تحذيرات:

- لا تسقط، راي أو محاولة إصلاح أو سماعه من قبل نفسك.
- تجنب التعرض للماء أو الرطوبة العالية.
- لا تعرض على أي مصدر حراري.

## Español

### Especificaciones

- Conectividad Bluetooth 4.0 (CSR)
- Perfiles admitidos: A2DP, AVRCP, HSP y HFP
- Frecuencia: 2402MHz-2480MHz
- Alcance inalámbrico: 10 m (360° en área abierta)
- Altavoz:  $\Phi$ 40mm
- Respuesta en frecuencia: 100Hz-9KHz
- Impedancia del altavoz: 32 Ohm
- SPL: 113dB $\pm$ 3dB
- Micrófono integrado:  $\Phi$ 4.0\*1.5mm, -42 $\pm$ 3dB
- Batería de polímero de litio de 450 mAh integrada
- Puerto de entrada micro-USB
- Puerto de entrada auxiliar de 3,5 mm
- Autonomía de reproducción: hasta 16 horas
- Carga completa: 1 horas
- Dimensiones: 170\*200\*75mm
- Peso: 189g
- Admite reproducción inalámbrica o cableada

### Advertencias:

- No deje caer, desmonte ni intente reparar los auriculares o por ti mismo.
- Evitar la exposición al agua o humedad.
- No lo exponga a fuentes de calor.

## Português

### Especificações

- Conectividade Bluetooth 4.0 (CSR)
- Perfil de suporte: A2DP, AVRCP, HSP, HFP
- Frequência: 2402MHz-2480MHz
- Alcance sem fio: 10m (360° área aberta)
- Driver alto-falante:  $\Phi$ 40mm
- Respostas de frequência: 100Hz-9KHz
- Impedância do alto-falante: 32 Ohm
- SPL: 113dB $\pm$ 3dB
- Microfone embutido:  $\Phi$ 4.0\*1.5mm, -42 $\pm$ 3dB
- Bateria embutida em 450mAh de polímero de lítio
- Porta de entrada micro-USB
- Porta de entrada aux 3,5mm
- Tempo de reprodução do fone de ouvido: até 16 horas
- Carga completa: 1 horas
- Dimensões: 170\*200\*75mm
- Peso: 189g
- Suporta reprodução sem/com fio

### Advertências:

- Não deixe cair, desmontar ou tentar reparar o fone de ouvido ou por si mesmo.
- Evitar a exposição à água ou alta umidade.
- Não exponha a qualquer fonte de calor.